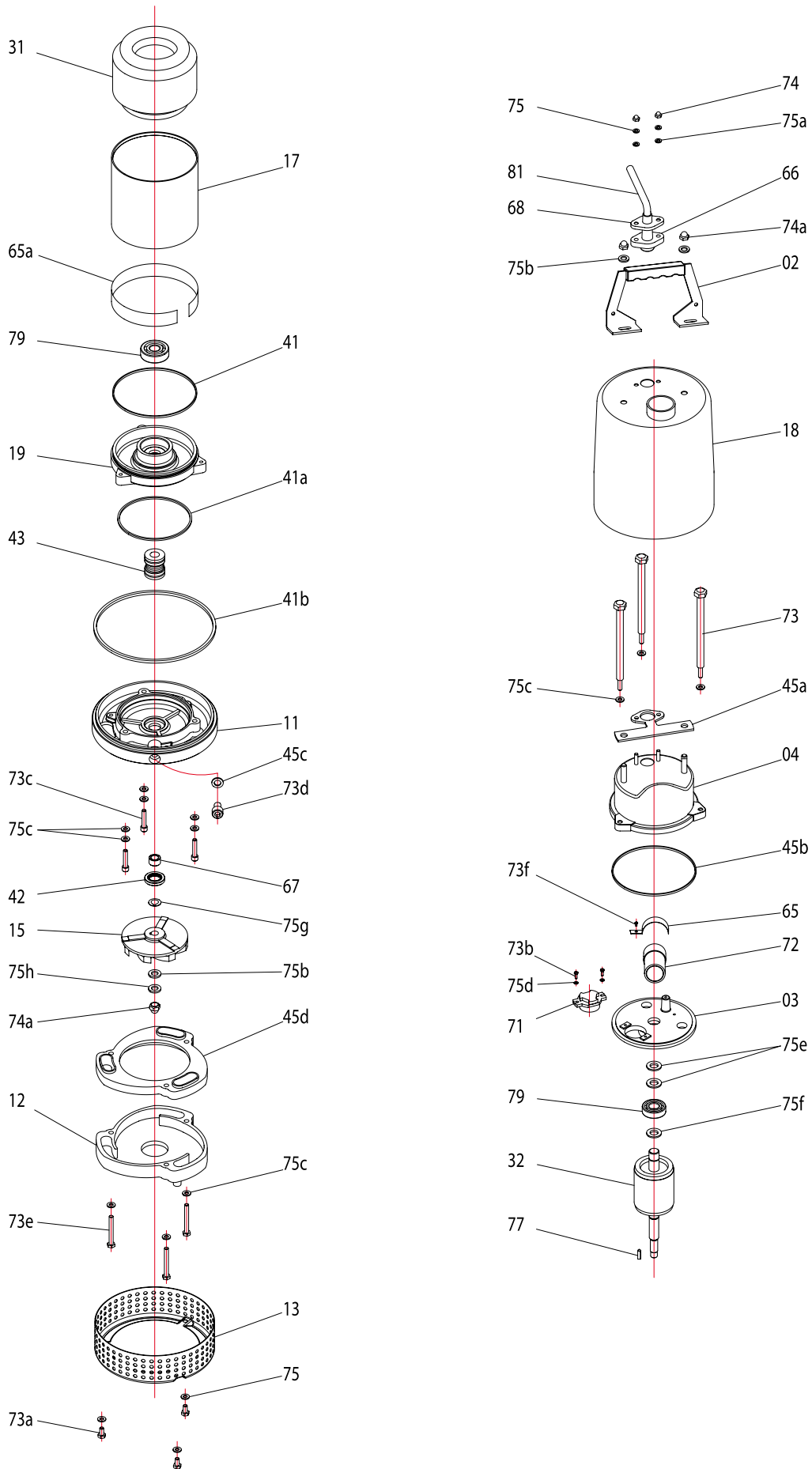


Type	A	B	C	D
FSS 250	334	293	72	184



Index	Code NO	Description	Q'ty	Size	Material
02	02434	Handle	1		SUS-304
03	0336FS-0075	Switch plate	1		FC-20
04	0443FS-0075	Motor cover	1		SUS-304
11	1143FSS0075	Seal bracket	1		SUS-304
12	1243FS-0075	Inlet plate	1		SUS-304
13	13435505007	Strainer	1	5.5MM*50*176	SUS-304
15	1543FSS0075084	Impeller	1	80*20*8*11	SUS-304
17	1743125095	Motor frame	1	125*95H	SUS-304
18	1843FS-0040-1	Outer case	1		SUS-304
19	1943FSS0040	Bearing bracket	1		SUS-304
31	311240203E3-B	Stator	1	125*60*30L 230V	
32	321FS-0040-1	Shaft/Rotor without Bearing	1	125*60*30L	
41	411026-01	O'ring	1	2.62MM*120.3	N-70
41a	411031-01	O'ring	1	3.1MM*104.4	N-70
41b	411026-03	O'ring	1	2.62MM*165	N-70
42	4214315-01	Oil seal	1	15MM-30*5	SUS-304
43	432214-4	Mech.seal	1	Double 14-4 SIC/SIC VS CM/CB	
45a	451FS-007510	Gasket	1		N-70
45b	452FS-015010	Gasket	1		N-70
45c	459010	Gasket	1		N-70
45d	454FSS004014	Volute liner	1		NBR
65	65312	Shim	1	57MM	
65a	6531114	Shim	1	14MM	
66	6671509	Cable gland	1		
67	674315-01	Shaft sleeve	1	15mm*11*1.05T	SUS-304
68	68431	Gland Holder	1		SUS-304
71	7127-03	Thermal protector	1	KA112 BBXL04	
72	721350012	Capacitor	1	350V*12UF	
73	73436061131	Screw	3	Flat hex.M6*113	SUS-304
73a	73431050121	Screw	3	Flat hex.M5*12	SUS-304
73b	73303040121	Screw	2	Round crossM4*12	SC
73c	73432060301	Screw	3	Socket hex.M6*30	SUS-304
73d	73432100161	Screw	1	Socket hex.M10*16	SUS-304
73e	73431060401	Screw	3	Flat hex.M6*40	SUS-304
73f	73303040081	Screw	1	Round crossM4*8	SC
74	7424305	Nut	2	M5	SUS-304
74a	7424308	Nut	3	M8	SUS-304
75	753430005-01	Spring washer	5	M5	SUS-304
75a	752430005	Washer	2	M5	SUS-304
75b	752430008-01	Washer	3	M8*19*1.1T	SUS-304
75c	753430006-01	Spring washer	12	M6	SUS-304
75d	752300004-01	Washer	2	M4	SC
75e	751306202	Wave washer	2	6202	SC
75f	752306202-01	Washer	1	6202	SC
75g	755430012-01	Washer	2	M12	SUS-304
75h	753430008-01	Spring washer	1	M8	SUS-304
77	772431-01	Key	1	4*4*10	SUS-304
79	79362021	Bearing	2	6202	
81	81081031004112	Cable	1	H07RN-F 1.0*3C*10M	
Remarks					
		O'ring & Gasket sets	1		