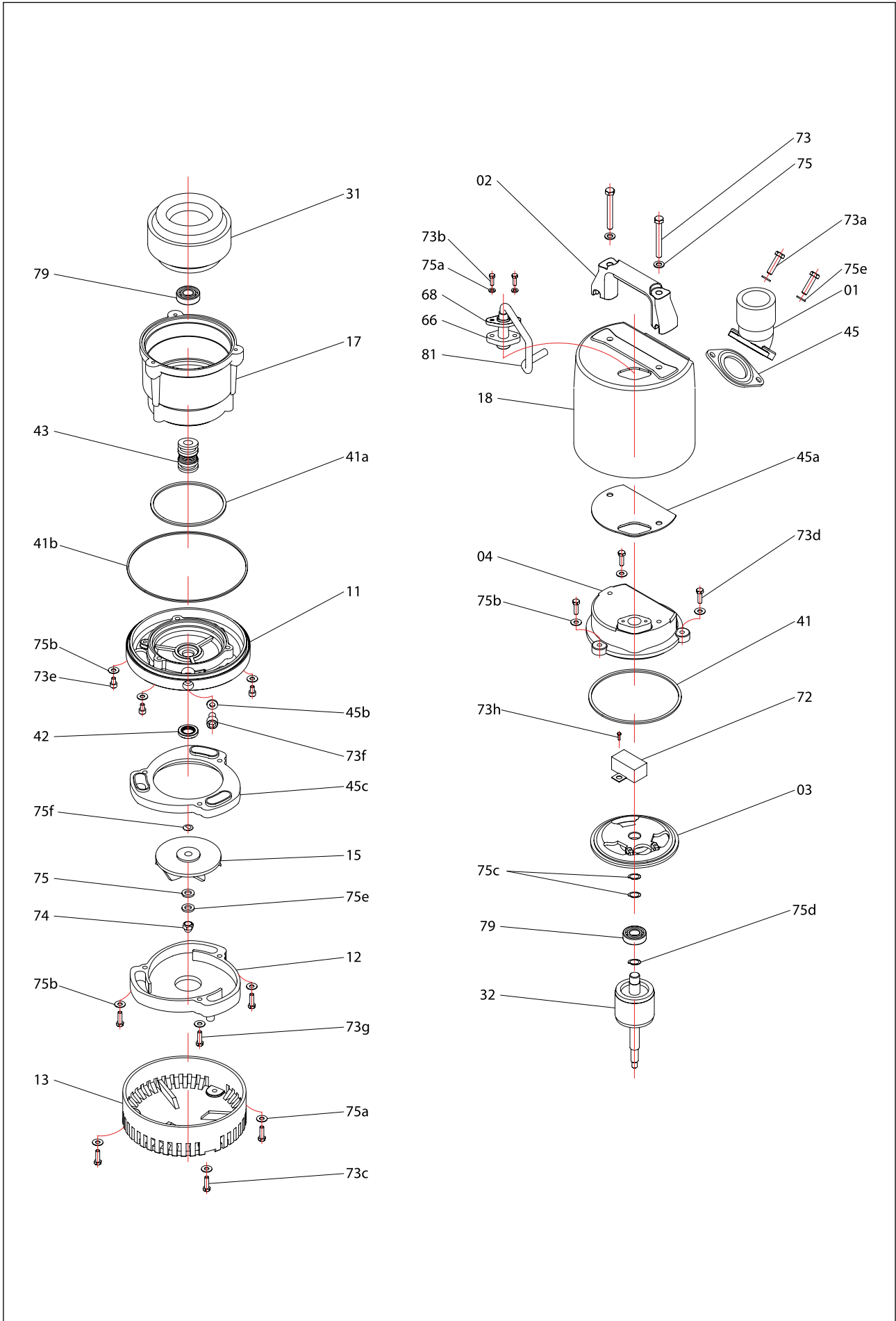


Type	A	B	C	D
FLS 400	308	243	76	183



Index	Code NO	Description	Q'ty	Size	Material
01	01500632	Discharge head	1	2"	Allu.
02	020121	Handle	1		Thermal Plastic
03	0350FLS0040	Switch plate	1		Allu.
04	0450FLS0040	Motor cover	1		Allu.
11	1150FLS0040	Seal bracket	1		Allu.
12	1236FLS0040	Inlet plate	1		FC-20
13	1301FLS0040	Strainer	1	50*176	Thermal Plastic
15	1503FS-0040098	Impeller	1	98*20*8*11	Thermal Plastic
17	1750125110	Motor frame	1	125*110H	Allu.
18	1850FLS0040	Outer case	1		Allu.
31	311220204E3-A	Stator	1	125*60*40L 230V	
32	321FLS0040	Shaft/Rotor without Bearing	1	125*60*40L	
41	411031-12	O'ring	1	3.1MM*130	N-70
41a	411031-01	O'ring	1	3.1MM*104.4	N-70
41b	411026-03	O'ring	1	2.62MM*165	N-70
42	4214315-01	Oil seal	1	15MM-30*5	SUS-304
43	432214-4	Mech.seal	1	Double 14-4 SIC/SIC VS CM/CB	
45	455FLS004010	Gasket	1		N-70
45a	451FLS004010	Gasket	1		N-70
45b	459010	Gasket	1		N-70
45c	454FS-004010	Volute liner	1		NBR
66	66715090	Cable gland	1		N-70
68	68431	Gland Holder	1		SUS-304
72	723350015	Capacitor	1	350V*15UF	
73	73301080701	Screw	2	Flat hex. M8*70	SC
73a	73431080201	Screw	2	Flat hex. M8*20	SUS-304
73b	73431050161	Screw	2	Flat hex.M5*16	SUS-304
73c	73431050121	Screw	3	Flat hex.M5*12	SUS-304
73d	73431060201	Screw	3	Flat hex.M6*20	SUS-304
73e	73432060301	Screw	3	Socket hex. M6*30	SUS-304
73f	73432100161	Screw	1	Socket hex. M10*16	SUS-304
73g	73431060401	Screw	3	Flat hex.M6*40	SUS-304
73h	73303040081	Screw	1	Round cross M4*8	SC
74	7424308	Nut	1	M8	SUS-304
75	752430008-01	Washer	3	M8	SUS-304
75a	753430005-01	Spring washer	5	M5	SUS-304
75b	753430006-01	Spring washer	9	M6	SUS-304
75c	751306202	Wave washer	2	6202	SC
75d	752306202-01	Washer	1	6202	SC
75e	753430008-01	Spring washer	3	M8	SUS-304
75f	754430012-01	Washer	2	M12	SUS-304
79	79362021	Bearing	2	6202	
81	81081031004112	Cable	1	H07RN-F 1.0*3C*10M	
Remarks					
		O'ring & Gasket sets	1		